

New!

Gunze 4000 Automatic Horizontal Stacker Bundler

Featured Benefits

- Job presets & automated adjustments speed make-ready
- High volume or short run market applications with fast bundle cycle rate capability
- Automatic operation requires machine tender only, no full-time operator
- Accurate count in every bundle
- Auto-Reject feature tied to press splices, blanket washes, and other functions
- Single or double strapping capability as standard
- On-board diagnostics & troubleshooting decision guides
- On-board maintenance schedules
- Easy integration with automated palletizing systems
- New and improved accessibility
- New single large capacity
- Improved program circuitry

The **Gunze 4000** Automated Horizontal Stacker Bundler sets a new standard for post-press process automation. Developed by the undisputed market leader in the highly-automated Japanese printing marketplace, the **Gunze 4000** enables printers to fully realize the manning reductions and productivity improvements promised by smart automation. Going beyond merely automating function, such as end-board insertion, bundle separation, compression, and strapping, this machine provides full control of accurate bundle count, automatic set-up of previously run jobs from the on-board job selection database, and fully integrated auto-reject functions tied to press operations, such as blanket washers and splicers. Gone are the days of 30-minute make-readies that required the skill and special knowledge of long-time machine operators. And operating cycle speeds are the fastest in the industry, with capabilities down to 23-second cycles. Bundles from 24 inches (610 mm) to 48 inches (1,220 mm) can be produced. This system will benefit short run or high volume printers

To further realize the full benefits of automation, the **Gunze 4000** comes equipped with on-board troubleshooting and diagnostics, including rigorous decision-tree troubleshooting guides, so that any downtime is minimized. The integrated maintenance schedules and maintenance logging help to assure maximum uptime, as well.

Of course, the heart of the stacker bundler is its ability to produce high quality bundles. In this department, the **Gunze 4000** is second to none. The process flow of this machine accepts spine-leading signatures, presses and conditions them, counts with a laser sensor, and creates the gap in the signature stream with a unique gap-smoothing mechanism. Product is stacked with the spine down, so any laps are totally protected. The **Gunze 4000** includes mechanisms to form the signatures, as they enter the stack, so even lightweight books can be uniformly controlled, such that the backbones are well aligned on the stacking belts.

Once the signature is in place, the speed control on the stacking belts maintains the uniform packing density to assure high quality signature alignment from the first to the last signature. Every set-up adjustment can be memorized for future job pre-sets.

The automatic end-board hopper holds approximately 62 inches (1,600 mm) and is easily loaded. The strapping head access and strap reel location is also conveniently placed so it is easy to access during the strapping cycle.



Gunze 4000 is manufactured by Gunze SOZ Divisions Group of Gunze Ltd., a \$2 billion globally-diversified manufacturer. Learn more about Gunze at www.gunze.co.jp/soz/

Systems Technology Inc.

1351 E. Riverview Dr. • San Bernardino • CA 92408 USA • Tel: 909.799.9950 • Fax: 909.796.8297

www.systems-technology-inc.com

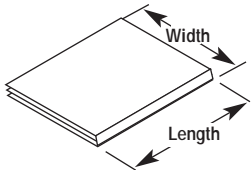
Gunze 4000 Automatic Horizontal Stacker Bundler

STANDARD SPECIFICATIONS

Product	Minimum	Maximum
Stream Thickness		25 mm (1.00")
Product Width	190.0 mm (7.48")	482.5 mm (19.00")
Product Length	101.6 mm (4.00")	298.5 mm (11.75")
Stream Shingle Lap		40 mm (1.575")
Edge Offset		+/- 3 mm (+/- .125")
Bundle Length Tabloid	Free length 800 mm (31.5") Strapped 600mm (24")	900 mm (35.4") 720 mm (28")
Bundle Length, Non-Tabloid	Free length 800 mm (31.5") Strapped 600 mm (24")	1600 mm (63") 1200 mm (48")
Page Weight	40g/m2 (30 lbs.)	130g/m2 (90 lbs.)
Fold Orientation	Fold leading into stacker	
End boards	9.5 mm (.375")	12.7 mm (.50")

• Tabloid products may have limits regarding maximum bundle length.
Review with STI Engineering.

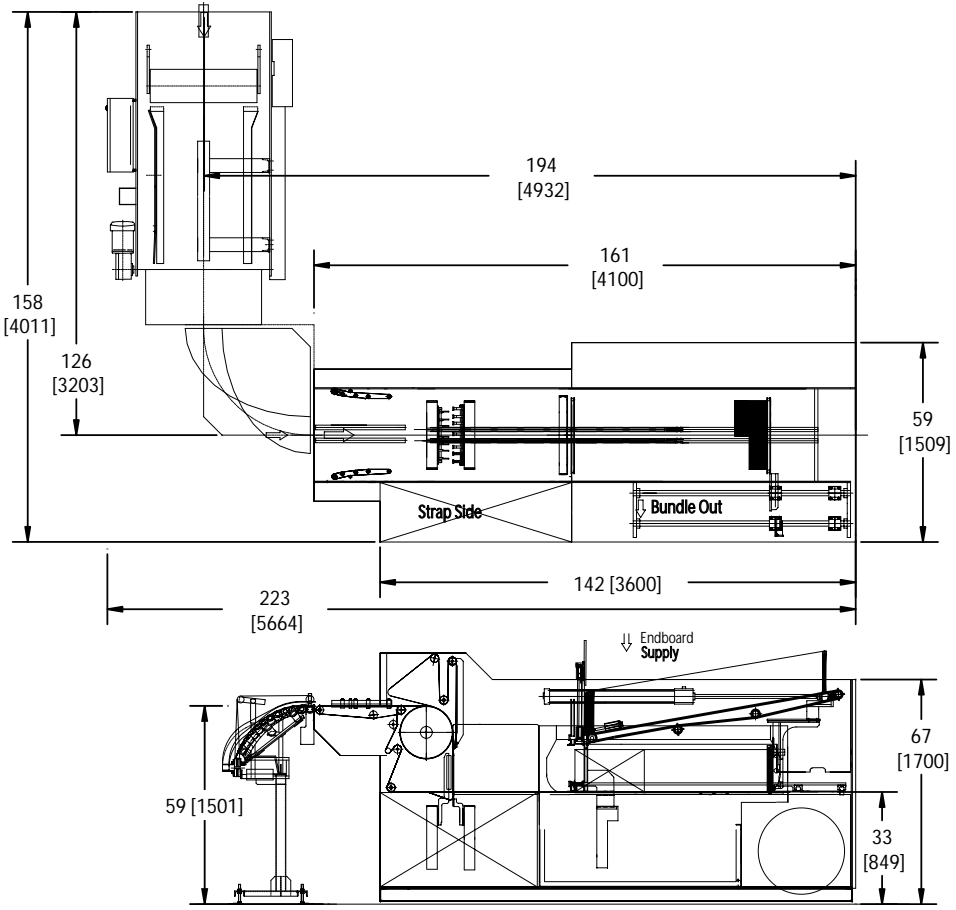
Machine:	
Operating Speed	>100,000 Products per hour (products permitting)
Belt Speed	7.5-50 m/min (24.6-164 ft/min)
Input Power	205+/- 10 VAC, 3ph, 50/60HZ and grounding 5.5KVA/unit
Nominal Current	16A/unit
Air Requirement	600 Norm-I/min (21 cfm @ 80psi)
Air Pressure	6 bar [80psi]
Infeed Height	1480 mm (58.27")
Overall Length	4100 mm (161.42")
Overall Width	1509 mm (59.41")
Overall Width	1880 mm (74.02")
Weight	4000 kg [8800 lbs.]
Paint Color	RAL 7011 (Dark Grey)



Product infeed includes crusher rolls, controlled gapping mechanism, product divert, and inverting spiral conveyor. A wide variety of equipment arrangements may be accommodated.



Large capacity 62 inch end board hopper.



1351 East Riverview Drive, San Bernardino, CA 92408
 TEL: 909-799-9950 • FAX: 909-796-8297
 www.systems-technology-inc.com

Rev: STI 8/05